

All Rights Reserved

Materials and specifications are subject to change without notice.
Featured machines in photos may include additional equipment. See your XCMG dealer for available options.



Mini Excavators
XE35E



XCMG European Sales & Services GmbH

Add: Europark Fichtenhain B 4, 47807 Krefeld, Deutschland

Tel: +49 (0) 2151 8209 351

Fax: +49 (0) 21 51-82 09-499

E-mail: Europe@xcmg.com

www.xcmg.com

XUZHOU CONSTRUCTION MACHINERY GROUP IMP. & EXP. CO., LTD

Add:NO.1, Tuolanshan Road, Xuzhou Economic Developing Zone,
Jiangsu,China 221004

Tel: +86 (0) 516 8773 9228

Fax: +86 (0) 516 8773 9230

E-mail: Europe@xcmg.com

Rated Power: 18.2kw
Operating Weight: 4.2t
Standard Bucket Capacity: 0.12m³





INTRODUCTION OF XCMG

Founded in 1943, XCMG is a multinational corporation with the most comprehensive range of competitive, influential products in the construction machinery industry. Our business covers eight key areas: construction machinery, heavy trucks, mining machinery, sanitation machinery, machinery components, construction, finance, and the ICT industry.

XCMG has established a global R&D network with a total of six centers in China, the US, Germany, Brazil and India, with China national technology center at its core. In addition to a number of manufacturing bases in China, the US, Germany, the Netherlands, Poland, Austria, Brazil, India, and Uzbekistan, we possess two complete machine brands [XCMG, Schwing], and several component brands including FT, AMCA. It is the strength of this global R&D network and manufacturing operations that has made XCMG the industry leading global construction equipment manufacturer that it is today.

For more than 30 years, XCMG has been sowing the seeds of overseas development as the No. 1 exporter in China's construction machinery industry. Today, we have 42 branches and offices, 315 distributors, 526 contractors in 188 countries and regions worldwide and are still growing rapidly.

XCMG IN EUROPE

Since its foundation in 2012, XCMG is gradually establishing a complete network including: R&D department, local distribution, supply chain management and an integrated customer services training centre. Nowadays, with 4 branches, XCMG has 178 multinational employees in Europe, of which more than 50% are R&D engineers:

ERC: XCMG European Research Center GmbH

EPC: XCMG European Purchasing Center GmbH

ESS: XCMG European Sales and Services GmbH

Our local professional R&D team and cutting-edge innovation platform guarantee that our products are carefully crafted to the smallest detail according to diverse needs of European customers.



▶ A Superior Model with Passionate Design

Developed with the concept of “Safe, Reliable, Efficient, Comfortable”, the XE35E hydraulic excavator offers additional value to the operator. New features are presented making the machines more productive, versatile, and cost effective.

- Yanmar 3TNV88F Stage V engine, along with the load-sensing hydraulic system provides high operating efficiency and fuel economy.
- This compact excavator is designed and built to work on more jobsites while reducing risk of damage to the machine and its surroundings.
- Convenient accessible service points make maintenance easier and reduce your potential downtime.

Zero Tail Swing

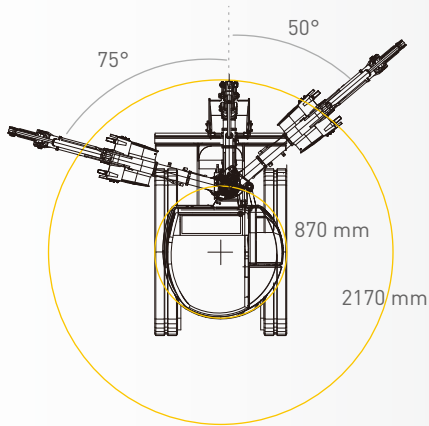
make the XE35E an advanced mini excavator. The 360° slewability, excellent stability and smooth control, combined unmatched power and efficiency, makes it a versatile excavator which performs at its best in urban area’s demolition, roadworks, landscaping and much more.

Optimized Efficiency

contributes to lower costs, increased productivity and maximum uptime, and a number of efficient features are combined on the XE35E. ECO mode allows you to choose the right machine setting for the job with impressive fuel efficiency.

Engine Speed Knob

The newly designed engine speed knob allows easy engine control.



Most compact one than ever.

Complete Equipped with AUX1, AUX2, and Quick Coupler lines.

With the multiple programmable 2-way proportional auxiliary lines and quick-coupler piping the XE35E meets almost all your attachment needs.

Boom, Arm Safety Valves and Blade Holding Valve as Standard

The XE35E is fitted as standard with a boom cylinder safety valve, an arm cylinder valve and a dozer holding valve to dig and handle all your material in a safe way.

▶ Large Operator Space with Ergonomic Control Layout

The XE35E offers the operator a large, comfortable workspace. The ergonomic layout of the controls, the travel pedals, and the adjustable wrist rests, are designed to reduce operator fatigue and increase productivity.



- 1 Operator station
- 2 Foldable travel pedal
- 3 Seat
- 4 Emergency switch
- 5 Blade control handle
- 6 Control switches
- 7 Air conditioner
- 8 Colour LCD monitor
- 9 Hydr piloted joystick
- 10 Sliding window
- 11 Windscreenwiper fluid
- 12 Adjustable arm support



Easy Access for Maintenance

The tilting cab provides quick and easy access to all inspection and maintenance points

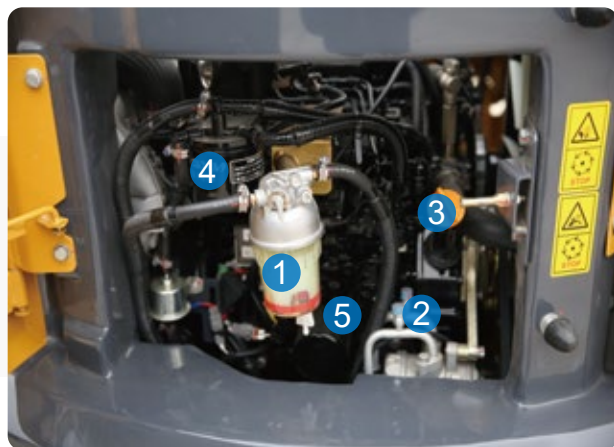
► Easy Service Access

Daily checks and regular service points including fuel and hydraulic oil fill are easily reached via the tiltable cabin. The main hydraulic valve and lines are also easily reached through a removable floor plate and side panels. The machine has durable steel body panels all around, offering good resistance to impact damage after a potential incident.



One-sided Engine Maintenance

The XE35E is designed for lower maintenance cost with longer service intervals – resulting in more machine availability on-site. Meanwhile, skilled XCMG-trained technicians are available to provide extra support when needed.



- 1 Fuel water separator
- 2 Compressor Freon fill port
- 3 Engine oil fill port
- 4 Fuel filter
- 5 Engine oil filter



Technical Specifications

■ Engine

| XE35E | |
|---------------------|---|
| Make/model | YANMAR/3TNV88F/EU Stage V |
| Fuel/cooling | Diesel/Liquid, forced circulation |
| No. of cylinders | 3 |
| Piston displacement | 1642 cm ³ |
| Power output | 18.2 kw (24.7 hp) / 2200 rpm (ISO 14396) |
| Max torque | 85.3-94.2 Nm/1320 rpm |
| Bore × stroke | 88 mm × 90 mm |
| Alternator | 12 V / 40 A |

■ Hydraulic system

This original XCMG design allows independent and combined operations of all functions by pilot controlled levers.

• Pump

| XE35E | |
|------------------------------------|---|
| Type | Load-sensing axial-piston pump with variable displacement |
| Total hydraulic capacity | 108l/min |
| AUX1 & AUX2 maximum flow rate | 40l/min |
| AUX1/AUX2 standard relief pressure | 150/270bar |

• Maximum system pressure

| XE35E | |
|-----------------------|--------|
| Boom | 270bar |
| Arm / bucket / travel | 270bar |
| Swing | 230bar |

■ Undercarriage

X-type undercarriage. The heavy-duty crawler chassis is very resilient with its fully welded, stress-free structure. Long service life is ensured by the use of first-class materials: hydraulic chain adjusters with shock-absorbing return springs, lifetime-lubricated track rollers and idlers.

• Number of rollers and track shoes

| XE35E | |
|---------------------------|--------|
| Bottom rollers (per side) | 4 |
| Track shoes | Rubber |
| Overall track length | 2220mm |
| Shoe width | 300mm |



■ Fluid capacities

| XE35E | |
|------------------------------------|-------|
| Cooling system (radiator capacity) | 8 l |
| Engine lubrication plus oil filter | 7 l |
| Fuel tank | 40 l |
| Hydraulic tank | 45 l |
| Hydraulic system | 28 l |
| Final drive case (each) | 0.7 l |

■ Environment

Noise levels comply with environmental regulations (dynamic values).

• Noise emission

| XE35E | |
|----------------------------|---------|
| Noise level LpA (ISO 6396) | 76dB(A) |
| Noise level LwA (ISO 6395) | 94dB(A) |

■ Swing mechanism

Each track is driven by an independent, high-torque, axial piston motor through planetary reduction gears. Two control levers provide smooth travel upon demand.

• Swing system

| XE35E | |
|-------------------|------|
| Boom swing, left | 75° |
| Boom swing, right | 50° |
| Slew rate | 9rpm |

■ Drive

Each track is driven by an independent, high-torque, axial piston motor through planetary reduction gears. Two control levers provide smooth travel or counter-rotation upon demand.

• Speed & traction

| XE35E | |
|---------------------------|-------------|
| Travel speed (low - high) | 2.2-3.6km/h |
| Traction force | 31.6kN |
| Gradeability | 30° |

■ Digging forces (ISO 6015)

| XE35E | |
|--|--------|
| Digging force, standard arm (ISO 6015) | 20.3kN |
| Digging force, long arm (ISO 6015) | 18kN |
| Digging force, bucket (ISO 6015) | 28.6kN |

■ Weight

| XE35E | |
|---|-------------------------|
| Operating weight with cab and bucket (ISO 6016) | 4200kg |
| Ground pressure with rubber tracks | 0.36kgf/cm ² |
| Transport mass (no attachment) | 4125kg |
| Weight of steel tracks | 448kg |
| Weight of rubber tracks | 292kg |
| Additional weight for long arm | 8kg |

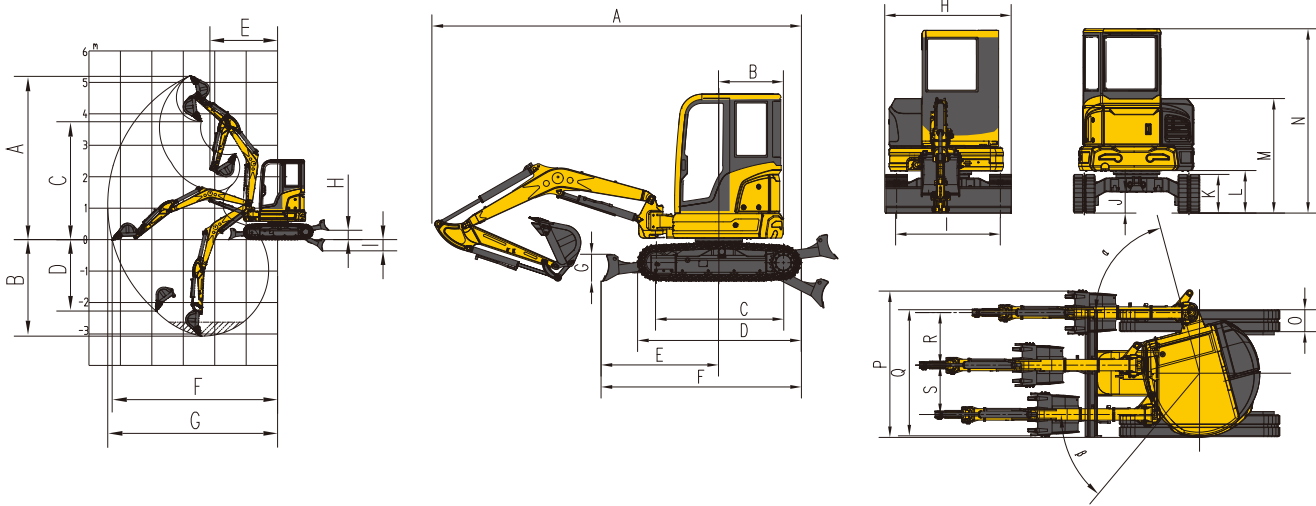
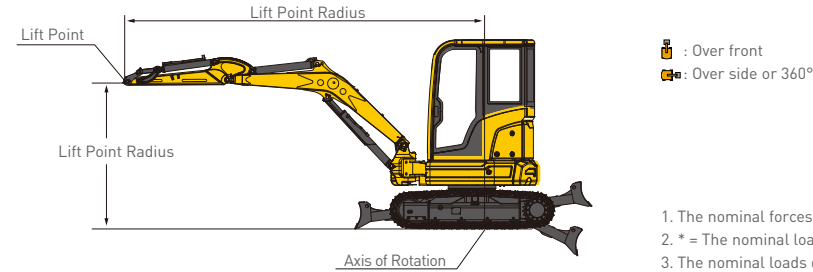
XE35E

■ Cab • standard arm (1350 mm) • standard counterweight • without bucket

| Lift Point Height | Over Front Blade Up/Down | | | | Over Side | | | | Max Radius (mm) |
|-------------------|--------------------------|--------------|----------------|---------------|------------------------|---------|---------|-------|-----------------|
| | Lift At Max Radius(Kg) | 2.0m | 3.0m | 4.0m | Lift At Max Radius(kg) | 2.0m | 3.0m | 4.0m | |
| 4m | 852* | | 816.9* | | 852* | | 816.9* | | 3337 |
| 3m | 766.7/812.6* | | 830.1* | 806.8* | 680 | | 830.1* | 724.1 | 4137 |
| 2m | 668/814.8* | 1957.3* | 1094.8* | 807.1/871* | 593.4 | 1921.5 | 1061.6* | 714.3 | 4570 |
| 1m | 643.5/830.4* | | 1170.1/1410.7* | 789.4/975.1* | 568.8 | | 1016.5 | 697.2 | 4672 |
| 0m | 667/850.4* | 1374 * | 1145.2/1508.3* | 784.7/1013.5* | 591.1 | 1374* | 992.9 | 685.1 | 4502 |
| -1 | 774/859.8* | 2166.6/2181* | 1143.8/1351.4* | 778.1/868.3* | 682.9 | 1794.8 | 991.6 | 686.3 | 4017 |
| -2 | 778.9* | 1299.8* | | | 778.9* | 1299.8* | | | 3012 |

■ Cab • long arm (1600mm) • standard counterweight • without bucket

| Lift Point Height | Over front blade up/down | | | | Over Side | | | | Max Radius (mm) |
|-------------------|--------------------------|----------------|----------------|--------------|------------------------|---------|--------|-------|-----------------|
| | Lift At Max Radius(Kg) | 2.0m | 3.0m | 4.0m | Lift At Max Radius(kg) | 2.0m | 3.0m | 4.0m | |
| 4m | 752.6* | | 687.3* | | 752.6* | | 687.3* | | 3620 |
| 3m | 710.6/739.1* | | 718.2* | 728.8* | 630.4* | | 718.2* | 723.4 | 4388 |
| 2m | 625.3/750.8* | | 981.5* | 803.5/810.1* | 555.2 | | 981.5* | 710.2 | 4763 |
| 1m | 600/773.6 | | 1165.5* | 782.4/931.4 | 532.3 | | 1011.4 | 689.9 | 4860 |
| 0m | 618.8/799.1* | 1371.2* | 1132.2/1488.5* | 766.1/999.7* | 548 | 1371.2* | 979.8 | 674.2 | 4711 |
| -1 | 707.7/830.2* | 2132.6/2375.7* | 1125.6/1405.4* | 762.5/926.5* | 624.3 | 1762.8 | 973.7 | 670.9 | 4243 |
| -2 | 822.2* | 1612.4* | | | 822.2* | 1612.4* | | | 3331 |



■ Working range

| | XE35E |
|---|--|
| A | Maximum digging height-std arm 5000mm |
| | Maximum digging height-long arm 5175mm |
| B | Maximum digging depth- std arm 3060mm |
| | Maximum digging depth- long arm 3264mm |
| C | Maximum dumping height- std arm 3600mm |
| | Maximum dumping height - long arm 3853mm |
| D | Maximum vertical wall digging depth-std arm 2260mm |
| | Maximum vertical wall digging depth-long arm 2384mm |
| E | Minimum swing radius- std arm 2170mm |
| | Minimum swing radius- long arm 2214mm |
| F | Maximum digging reach at ground level- std arm 5200mm |
| | Maximum digging reach at ground level- long arm 5407mm |
| G | Maximum digging reach- std arm 5300mm |
| | Maximum digging reach- long arm 5546mm |
| H | Maximum dozer lifting height 305mm |
| I | Maximum dozer cutting depth 360mm |

■ Dimensions

| | XE35E |
|---|---|
| A | Over length 4960mm |
| B | Tail slew radius 870mm |
| C | Tumbler length 1721mm |
| D | Track length 2200mm |
| E | Dozer blade, maximum reach at ground level 1590mm |
| F | Undercarriage length 2690mm |
| G | Dozer blade height 367mm |
| H | Overall width 1740mm |
| I | Track gauge 1440mm |
| J | Minimum ground clearance 297mm |
| K | Track height 531mm |
| L | Ground clearance of counterweight 587mm |
| M | Over all height of tank hood 1590mm |
| N | Overall height 2535mm |
| O | Track shoe width 300mm |
| P | Working width at maximum right-hand rotation 2005mm |
| Q | Working width at maximum left-hand rotation 1728mm |
| R | Maximum boom offset to the right 770mm |
| S | Maximum boom offset to the left 580mm |
| a | Maximum boom swing angle to the left 75° |
| B | Maximum boom swing angle to the right 50° |

➤ Standard and Optional Equipment

■ Engine

| | |
|-----------------------------------|---|
| Yanmar engine 3TNV88F, EU Stage V | ● |
|-----------------------------------|---|

■ Hydraulic system

| | |
|------------------------------------|---|
| Single or dual way pipeline (AUX1) | ● |
| Dual way pipeline (AUX2) | ● |
| Hydraulic quick coupler line | ● |
| Fingertip proportional control | ● |

■ Cab & interior

| | |
|---|---|
| TOPS/ROPS | ● |
| OPG | ○ |
| Adjustable seat | ● |
| Textile and permeable suspension seat with retractable belt | ○ |
| Air conditioning | ● |
| Colour LCD monitor | ● |
| AM/FM radio with Bluetooth | ● |
| DAB radio with Bluetooth | ○ |

■ Undercarriage

| | |
|----------------------|---|
| Fixed undercarriage | ● |
| Dozer blade | ● |
| Rubber tracks 300 mm | ● |
| Steel tracks 300 mm | ○ |

■ Safety

| | |
|--|---|
| Boom, arm and dozer cylinder safety valves | ● |
| Travel alarm | ● |
| Rotation beacon | ○ |
| Engine overheat warning and restart prevention system | ● |
| Quick coupler switch with alarm | ● |
| Emergency stop switch | ● |
| Front and top cab protection | ○ |
| LED work lights (2 on cab-front, 1 on cab-rear, 1 on boom) | ● |

■ Other

| | |
|--------------------------------|---|
| Standard arm 1350 mm | ● |
| Long arm 1600 mm | ○ |
| General purpose bucket 0.12 m³ | ○ |

Standard: ●
Optional: ○

Some of these options/equipment may not be available for certain markets. Please contact your local XCMG dealer for more information on availability or to customise your machine to suit your application requirements.



Optimum Services , XCMG Guaranteed



XCMG approved attachments



Genuine parts



Extension of warranty



Financial solutions



Maintenance contract



Telematics



Monitoring systems

Professional Integrated Complete Solutions

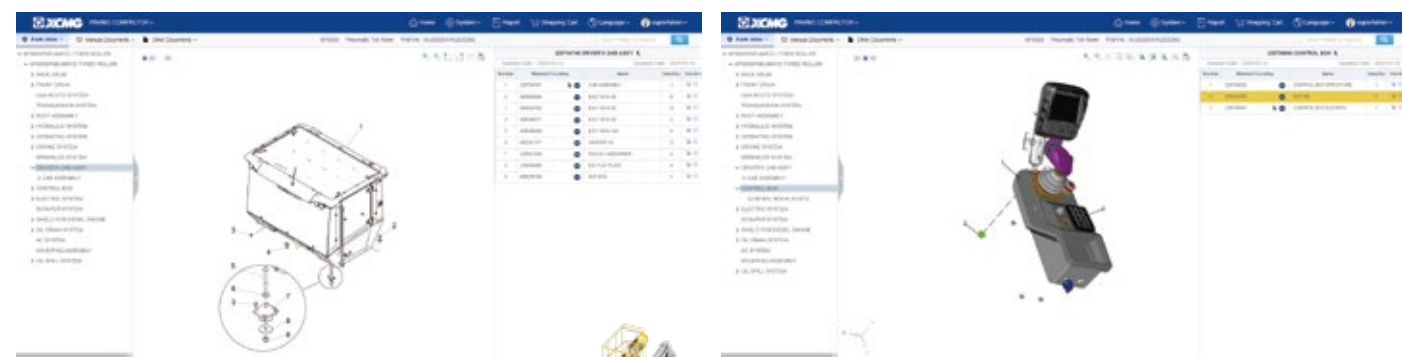
XCMG group has built a strong reputation based on the quality, reliability and durability of its construction machinery. What's more, XCMG has gradually established a service network to constantly provide its local integrated and highly efficient complete solutions for all customers.

Full Range of Services Ready for you

In order to respond to your needs as fast as possible, XCMG experts are on their way to your job site from one of our facilities near you. Full range of services are available in order to reduce your total cost of ownership and increase your revenue.



XCMG Global Spare parts System



Mobile cranes



Excavators



Aerial work platforms



Wheel loaders



Road machinery

