



**SOLID
TO SUCCEED**

XC7-TV12

SKID STEER LOADER



SOLID TO SUCCEED



Operating Weight	5150 kg
Engine Rated Power	53.7 kW
Rated Load	360 kg
Bucket Capacity	0.65m ³

XC7-TV12



High Reliability

- High-intensity hydraulic hose
- ROPS&FOPS Cab
- Rearview camera



High Efficiency

- Powerful engine
- U.S. EPA Tier 4 Final & EU Stage V emission standard



Advanced Technology

- Lightweight design
- Optimized frame structures



Comfort and Convenience

- Mechanically suspended damping seat
- Optimized air-conditioning system



Flexibility and Versatility

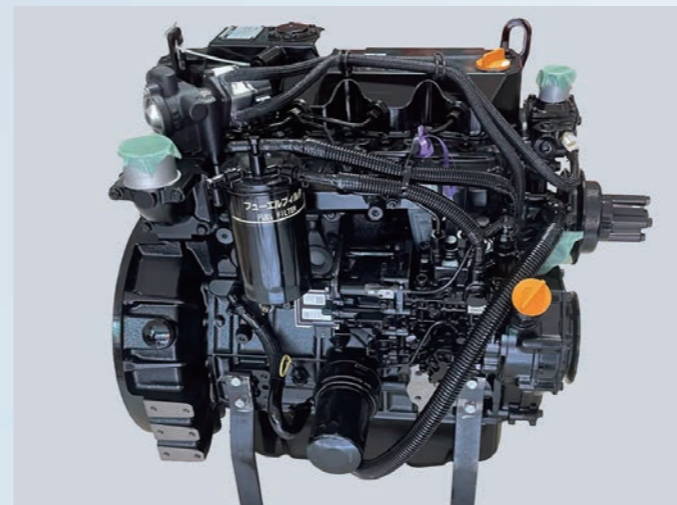
- Multiple attachment choice
- Applications in various scenes
- Customized equipment



Easy Maintenance

- One-stop maintenance
- Rear-positioned fuel filler

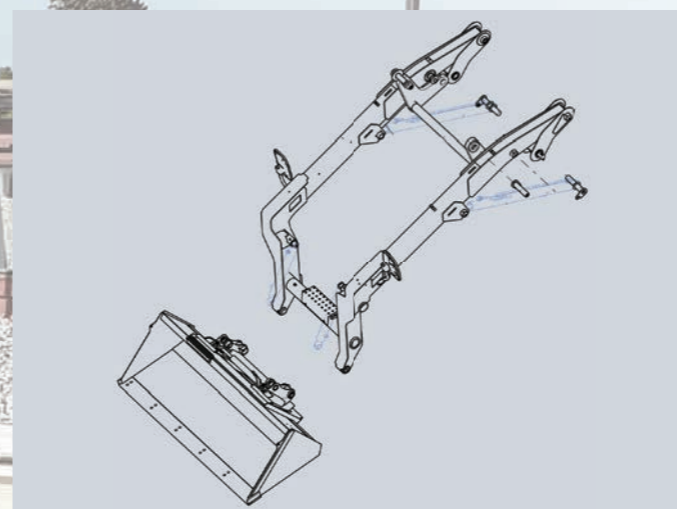
| HIGH EFFICIENCY



- Using the international brand engine, our loader offers strong power, low noise, and high reliability. Its emissions meet U.S. Tier 4 Final and Euro V standards, ensuring compliance with higher environmental protection requirements.



- The entire machine utilizes electro-hydraulic proportional control, which ensures responsive and precise functioning.
- The core components of the hydraulic system adopt highly reliable traveling hydraulic pump and traveling motor.



- Lightweight design of the working device and higher load capacity of the lifting arm.
- Each articulated pin adopts high-intensity pins to enhance the service life of structural components.



- Dual handle operation allows users to select between ISO/H modes, making it easier for operators to adapt quickly based on regional preferences.



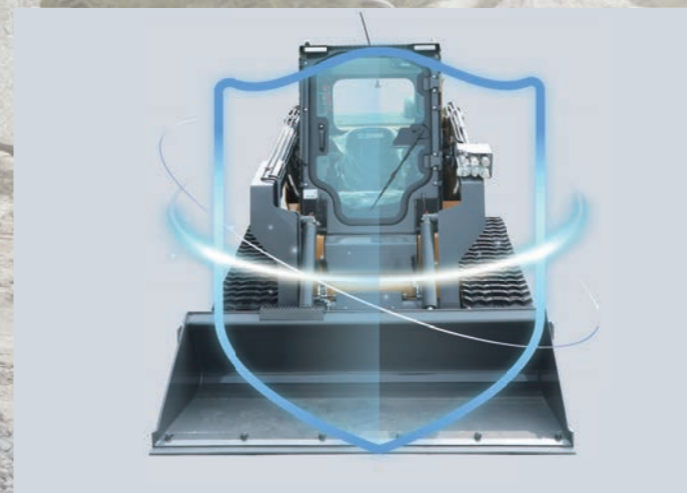
| SAFETY AND COMFORT



- ROPS&FOPS cab is sturdy and stable, ensuring operating safety when subjected to severe impacts.



- The cab is designed based on ergonomic principles, featuring a spacious interior, excellent visibility for operation and easy-to-see instrument placement. All buttons and switches are conveniently within reach.
- The safety armrests are designed to prevent accidental event and include standard safety measures to ensure safe operation.



- The optimized frame structures effectively enhance the robustness of critical bearing components and demonstrate exceptional performance under torsion and impact loads in various conditions.
- The hydraulic system enables to lower flameout drop arm, which ensures the safety and reliability of the whole machine during operation.



- The spacious interior cab features mechanically suspended damping seat that offer multiple adjustment angles for high comfort.
- Optimized internal air duct design enhances air conditioning performance by balancing airflow and maintaining stable temperature control, featuring glass defrost and footwarming functions.

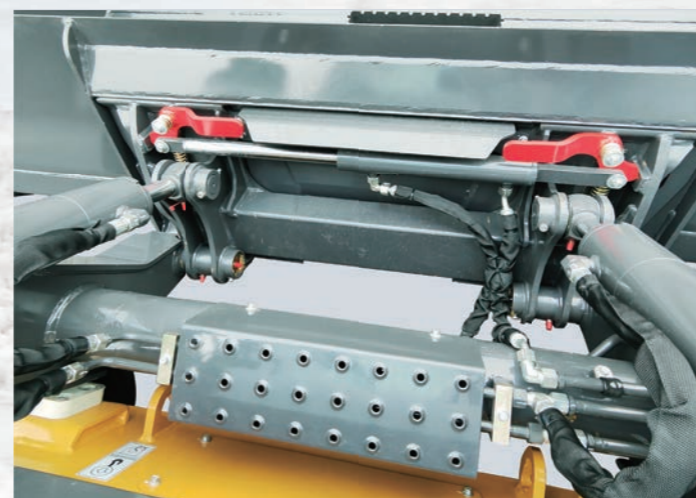
FLEXIBILITY AND VERSATILITY



- With 360° in-situ steering capability, it can change direction without large turning space in confined areas, significantly enhancing operational efficiency and making it especially suitable for narrow spaces such as ship barns and livestock barns.



- The large contact area between the tracks and the ground provides more stability during travel, making it less likely to slip or sink on wet, muddy, or soft soil. This feature makes it particularly suitable for operations in soft ground conditions, such as gardening and farming.

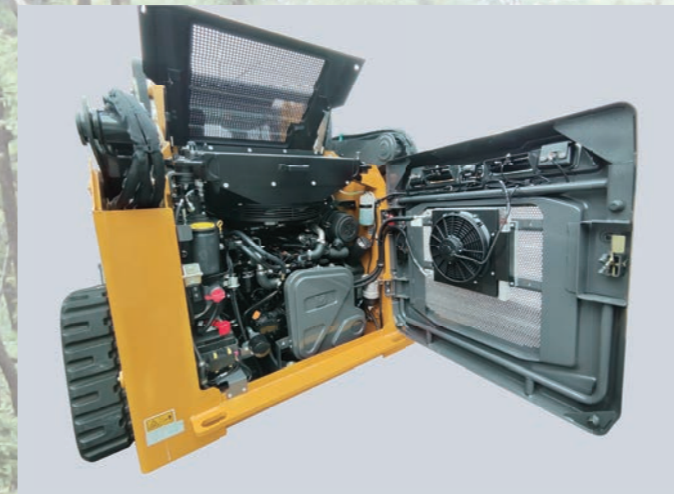


- Standard auxiliary pipes are designed for multi-purpose machines, providing more available options.
- Stronger hydraulic power source for better performance.



- Adaptation of different standard quick coupler devices that provide flexible equipment choices and allow for on-demand replacements.
- Multiple equipment options and available customized equipment services. (Detailed information on the optional equipment page.)

EASY MAINTENANCE



- With a large-angle back-flip design of the cab, the upper cover of the rear hood can be fully opened, allowing for one-stop maintenance of the main components.
- The primary maintenance components, such as oil level checking, oil adding and grease filling are located in easily accessible areas. This design allows for convenient maintenance, including the removal and replacement of the air filter cartridge and electrical equipment.



- Optimized placement of lubricating oil ports at each articulation enhances the overall maintenance performance.
- Rear-positioned fuel filler allows for easy fuel addition and rear-positioned fuel filler allows for easy fuel addition and improves maintenance performance.



- Remote malfunction diagnosis, enhancing maintenance efficiency.
- GPS terminal system monitors the machine's construction status and engine performance data.



- Global coverage of marketing and service outlets ensures exceptional support.

| MAIN SPECIFICATIONS

Overall parameters

Model	Parameters
Operating Weight	5150 kg
Rated Load	0.65 m ³
Bucket Capacity	1360 kg
Bucket Breakout Force	33 kN
Tipping Load	3886 kg

Engine

Manufacturer/Model	Yanmar , 4TNV98CT
Type	In-line four-cylinder hydrocooling
Rated Power	53.7 kW at 2500 PRM
Maximum Torque	291 Nm at 1625 RPM
Emission Stage	EPA T4F&EU Stage V
Displacement	3.319 L

Driveline

Tranmission	Type	Closed Hydrostatic	
Travel Speed	Forward	1 st	8 km/h
		2 nd	14 km/h
	Reverse	1 st	8 km/h
		2 nd	14 km/h
Tyre	450x86x56(rubber track)		
Minimum Ground Clearance	215 mm		

Brake

Service Brake	Hydrostatic brake
Parking Brake	Spring brake&Hydraulic release
Emergency Btake	Emergency stop (optional)

Hydraulic system

Type	Fixed
Pump	Gear pump
Rated Flow	95/142.5 L/min
Control Valve	Third function multiway valve
System Pressure	23 MPa
Operating Hydraulic Circuit	Lifting circuit for lifting, holding, lowering and staying movable of the boom
Total Circle Time	≤14 s
Hydraulic Cylinder	Lifting cylinder-2-70×981 mm
	Tipping bucket cylinder-2-70×401 mm

Cab

Cab	ROPS & FOPS cab is equipped with rear-view mirror, extinguisher, breaker, clothes hook;
Heating Power	3.5 kW
Cooling Power	4.5 kW

Referenced Filling Capacity

*Reference only. Filling volume is based on the actual scale.

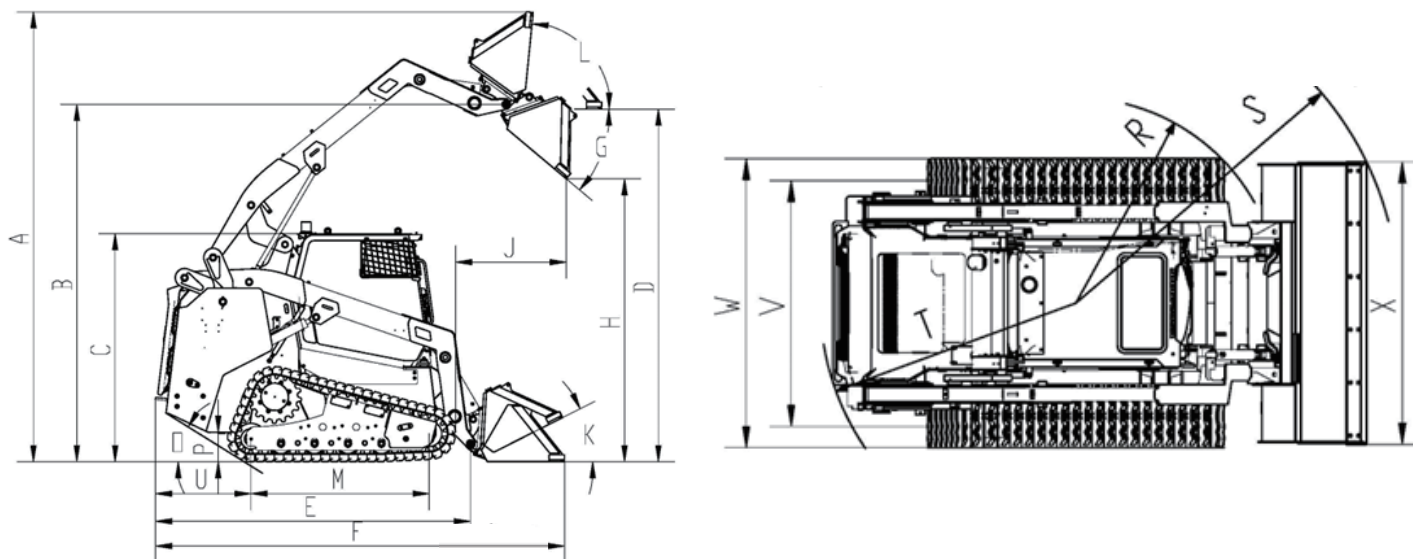
Diesel	105 L
Engine Oil	10 L
Coolant	20 L
Hydraulic Oil	50 L

Sound

Sound Pressure Level (ISO 6396:2008)	81 dB
Exterior Sound Power Level (ISO 6395:2008)	103 dB

• The guaranteed sound levels described below may vary depending on factors including operating conditions, cooling fan speeds, engine type, and so on. Hearing protection is required if the operator works in an improperly maintained cab or is exposed to noisy environments with open doors or windows.

MAIN SPECIFICATIONS



	Dimension and Specification	Parameter
A	Height: operating (max)	4160 mm
B	Height to the hinge pin	3300 mm
C	Height: ground to cab	2100 mm
D	Clearance: level bucket	3135 mm
E	Length: overall (without bucket)	2915 mm
F	Length: overall	3786 mm
G	Dumping angle	40°
H	Dumping height (max)	2615 mm
J	Dumping reach	1025 mm
K	Rollback angle: on the ground	26°
L	Rack angle at full lift	84°
M	Wheelbase	1640 mm
O	Departure angle	31°
P	Height: ground clearance	216 mm
R	Turning radius: over tyres	1468 mm
S	Turning radius: over bucket	2293 mm
T	Turning radius: rear machine	1806 mm
U	Length: rear	885 mm
V	Track gauge	1595 mm
W	Turning radius: over track	2045 mm
X	Width over bucket	2130 mm

- The technology of XCMG wheel loaders is subject to constant improvement and upgrading. In case the specifications or detailed appearance contained in this brochure differ from actual products, the latter shall prevail.
- XCMG reserves the right of final interpretation for the above. Our products may be modified without prior notice to users.

EQUIPMENT

Powertrain	STD	OPT
Yanmar Engine	●	
Engine intake preheating	●	
Parking brake	●	
Service brake (Hydrostatic)	●	
Emergency parking		●
Rigid suspension		●

Hydraulic system	STD	OPT
Third function quick coupler	●	
Bucket auto-leveling/ stopping	●	
Diagnostic pressure joint	●	
Hydraulic filter	●	
Hydraulic Quick coupler	●	
Soft gear switch	●	
Ride control		●
Independent heat dissipation	●	

Electrical system	STD	
Electrical air cleaner blockage alert	●	
Reading light	●	
Turning light	●	
LCD Touch screen	●	
2 Front working light (LED)	●	
2 Rear working light (LED)	●	
2 Rear combined lights (reserve, turn signal, clearance light)	●	
Rotating warning light	●	
Engine coolant temperature	●	
Fuel tank display	●	
Engine tachometer	●	
Engine malfunction code	●	
Battery voltage	●	
Working hour display	●	
Engine oil pressure alarm	●	
Battery main switch	●	
Electric horn	●	
Parking brake	●	

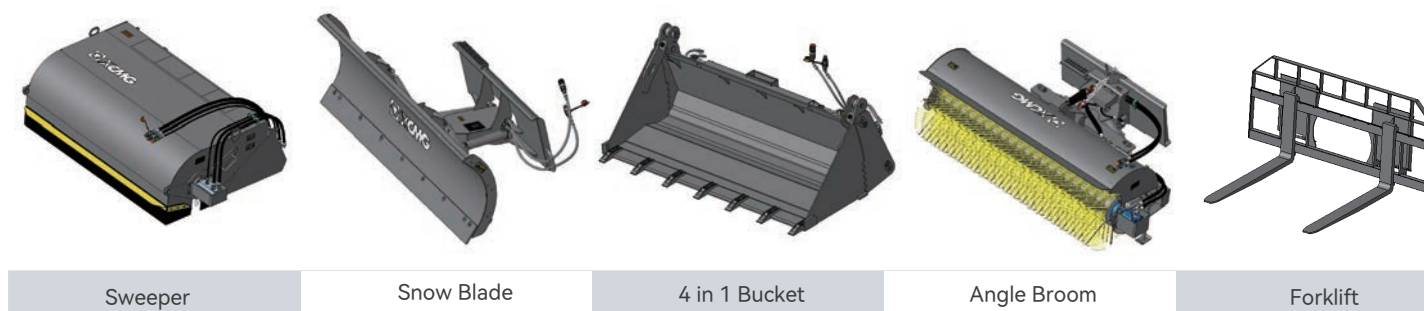
Other	STD	OPT
Anti-corrosion spray		●
Toolkit	●	
Reversible fan		●

Cab	STD	OPT
ROPS/FOPS cab	●	
Radio /USB player	●	
Clothes hook	●	
Retractable safety belt	●	
Mechanically suspended seat	●	
Cooling and heating air-conditioner	●	
Cup holder	●	
Operating case (adjustable with seat)	●	
Cab lock/ key	●	
File bag	●	
Start-up	●	
Left/right armrest	●	
Safety hammer	●	

Safety	STD	OPT
Boom safe rod	●	
Boom droppng (flameout)	●	

Bucket	STD	OPT
0.65m³ Arc bucket (84")	●	
0.45m³ bucket		●
Bucket wear plate		●
4 in 1 bucket		●

Attachment	STD	OPT
Sweeper		●
Auger		●
Breaker		●
Excavator		●
Digger		●
Planer		●
Tree Transplanter		●
Bulldozer		●
Industrial grapple		●
Forklift		●
Snow blade		●
Hay spear		●
Deicer		●
Vibratory compactor		●
Hook		●
Oil drum clamp		●
Clamplng piler		●
Grass catcher		●
Snow thrower		●
Concrete mixer		●



Breaker	Auger	Excavator	Concrete Mixer	Snow Thrower
---------	-------	-----------	----------------	--------------

XCMG loaders offer various attachment choices. Please contact your local dealer for detailed information and the delivery cycle after selection.

OPTIMUM SERVICES XCMG GUARANTEED



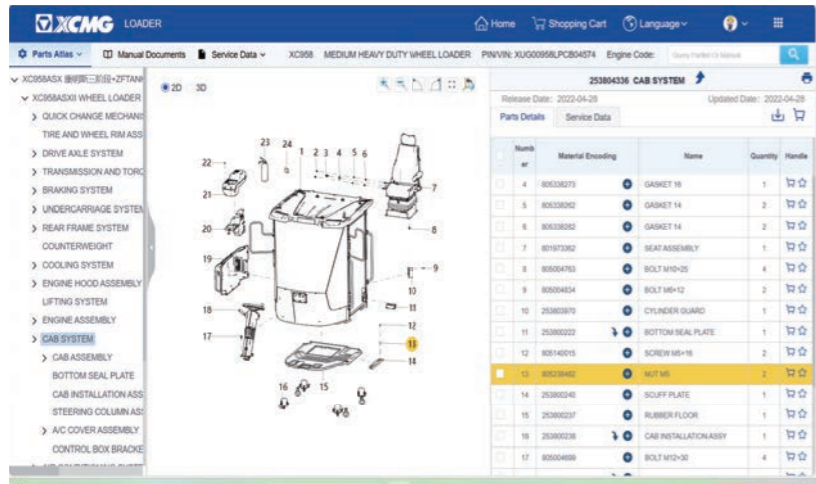
Telematic Information Processing

Remote Diagnosis. GPS terminal system monitors the construction state of the machine and the operating.



Professional Integrated Complete Solutions

XCMG has built a strong reputation based on the quality, reliability and durability of its construction machinery. What's more, XCMG has gradually established a service network to constantly provide its local integrated and highly efficient complete solutions for all customers.



Full Range of Services Ready for you

In order to respond to your needs as fast as possible, XCMG's experts are on their way to your job site from one of our facilities near you. Full range of services are available in order to reduce your total cost of ownership and increase your revenue.



Forestry construction



Forestry construction



Municipal Construction



Municipal Construction



Earthmoving Construction



Earthmoving Construction



Farm Construction



Farm Construction

Introduction

Our Mission and Vision: Empower Solid Future.

XCMG was initially founded as the Huaxing Iron Factory in 1943 and was established as a group in 1989. Being a trailblazer walking through the hard days in astern and steady manner, XCMG has taken the lead in development of Chinese construction machinery industry and become a billion-dollar leading enterprises with global competitiveness and influence. XCMG’s performance retained its NO.1 position in China construction machinery industry and has achieved the ranking of NO.3 in the Global construction machinery industry for 3 consecutive years and has been listed in the “World Brand 500” for 4 consecutive years.

XCMG Earthmoving Machinery Division is one of the five major business divisions of XCMG. We are professionally dedicated in the R&D, manufacturing, sale and supporting service of 0.6–35tons full-series loaders, skid-steer loaders and backhoe loaders. In line with the business philosophy of facing the world, integrating the world and serving the world, XCMG Earthmoving Machinery Division takes the leading position in quality and value, and become the new benchmark in the high-end market of China earthmoving machinery industry.

1943

TOP 3

TOP 3 Global Construction Industry

2000

More than 2000 Service Terminals

8500

More than 8500 Valid Patents

40

More than \$4 Billion Annual Exports