



XCMG | **SOLID
TO SUCCEED**

XC918HST

W H E E L L O A D E R



Operating weight	6300kg /13889.1 lb
Engine rated power	53.7kW /72.0hp
Rated load	1800kg /3968.3 lb
Bucket capacity	1.0m ³ /1.3 yd ³

XC918HST WHEEL LOADER

XC918HST is XCMG new generation hydrostatic loader, featuring hydrostatic transmission technology and offering high comfort, maintainability and reliability. Developed after extensive market and technical research, our loader is compact and flexible and delivers powerful, smooth operation. The advanced intelligent technology provides an exceptional operating experience, allowing the loader to be widely used in municipal construction, animal husbandry, and agriculture as well as forestry work conditions.



Advanced Technology

- Hydrostatic transmission technology
- Real-time traveling motor control
- Complemented by inching brake



Safe Design

- ROPS&FOPS cab
- Emergency brake button
- Hydraulic lock (lifting /tilting /quick coupler)



Flexibility and Versatility

- Short-tail design(lower steering radius)
- Center articulated oscillation structure
- Standard third function quick coupler
- Various optional attachments



High Reliability

- CAE simulation analysis
- Heavy-duty frame structure
- Reinforced drive axle



Comfortable Operation

- Air-suspension seat (optional)
- FNR integrated joystick
- Adjustable seat/ steering column
- Jack simulation technology



Easy Maintenance

- Front-flip hood
- Side-flip cab
- Centralized pressure interface



HIGH EFFICIENCY

High Quality For Great Performance

The XC918HST wheel loader is equipped with Yanmar engine and utilizes hydrostatic transmission technology which offers real-time monitoring of hydraulic transmission components' working status, ensuring optimal power transmission system matching. Our loader delivers stronger power, higher efficiency, lower fuel consumption and enhanced overall performance.



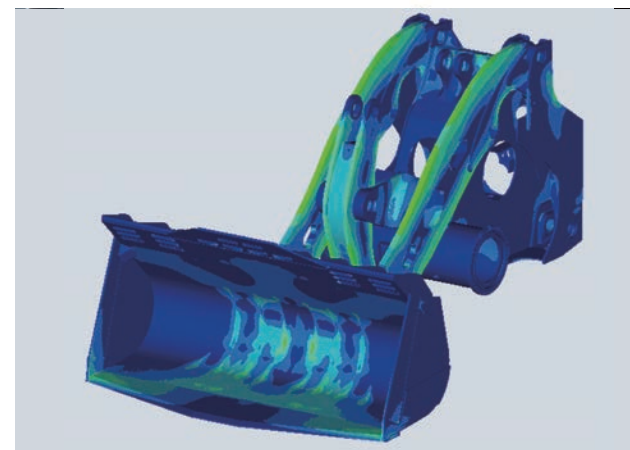
Hydrostatic transmission technology allows for precise control of power transmission components, leading to more efficient performance.

The lightweight design of the overall structure is complemented by an inching brake to realize braking energy-saving.



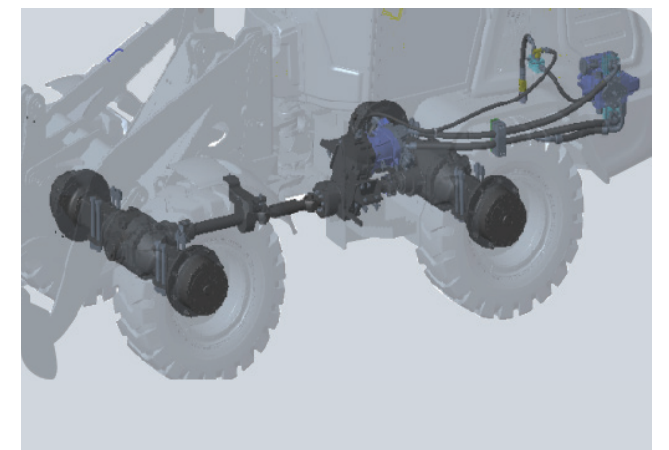
The Yanmar engine has good power, a large torque reserve, high economy and low fuel consumption.

Engine speed control is optimized to improve fuel economy further while extending engine life.



Z-bar work connecting rods offer exceptional lifting and digging capabilities for easier operation.

The front and rear frames adopt the integral heavy-duty structure to withstand the resistance and impact loads under various working conditions.



Hydrostatic continuously variable transmission features electronic control for switching between high and low speeds, eliminating shift impact. This high-performance power transmission system provides a smoother and more efficient operating experience.

The reinforced drive axle has a high dynamic load coefficient, making it more suitable for heavy-duty working conditions.

SAFETY AND COMFORT

Safety First Comfort Always

XC918HST always ensures a safe and comfortable operating experience in challenging construction environments. The ROPS & FOPS cab is robust and durable, equipped with emergency stop button and hydraulic lock to protect your safety. The ergonomically designed cab features easily accessible controls, reducing work intensity and improving your overall experience.



The emergency stop button inside the cab allows for engine shutdown in emergencies.

The hydraulic lock and quick coupler cylinder lock function reduce safety risks from misoperation.



ROPS&FOPS cab is sturdy and stable, ensuring operating safety when subjected to severe impacts.

CAE simulation analysis is implemented for structural components, which reduces stress concentration and eliminates partial weaknesses, with a high safety coefficient.

Machine-completed welding processes combined with thick materials ensure firm welds, providing a high torsion coefficient and great overload resistance.



Cooling and heating air-conditioning achieve 360° air-surrounding (circulation). The electric drain valve provides a more convenient way to control.

The integrated instrument panel displays the overall status in real time and has a malfunction alarm.

Panoramic cab provides a wider view and facilitates easier work.



The high-performance air-suspension seat offers six-way adjustability. The handle and arm box can be individually adjusted to meet different needs of operators.

The thick rubber floor provides excellent sealing, sound insulation and noise reduction.

Jack simulation technology for optimal channel design.

FLEXIBILITY AND VERSATILITY

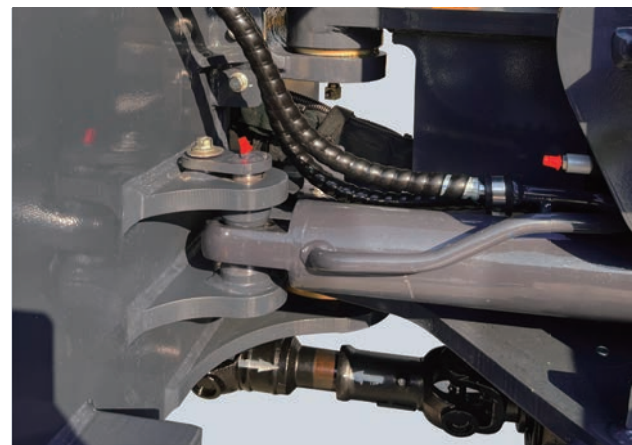
Adaptable Solutions For Every Challenge

XC918HST Loader offers exceptional flexibility for operations in confined spaces making it ideal for navigating through narrow alleys, indoor locations and crowded construction sites. The XC918HST can quickly switch between various attachments, including buckets, forks, snowplows and breakers, allowing it to adapt to various work tasks.



Optimized design and compact structure suitable for municipal construction, animal husbandry and other working conditions.

Intelligent real-time control of motor speed and displacement offers various travel modes.



Center articulated oscillation structure with 9° center oscillating and ±38° articulated steering.

With a short tail design, the machine's size and turning radius are reduced, making it more flexible.



The standard third-function hydraulic system designed for multipurpose implements provides multiple work options.

High-flow hydraulic circuits for enhanced performance.



Adaptation of different standard quick coupler devices that provide flexible attachment choices and allow for on-demand replacements.

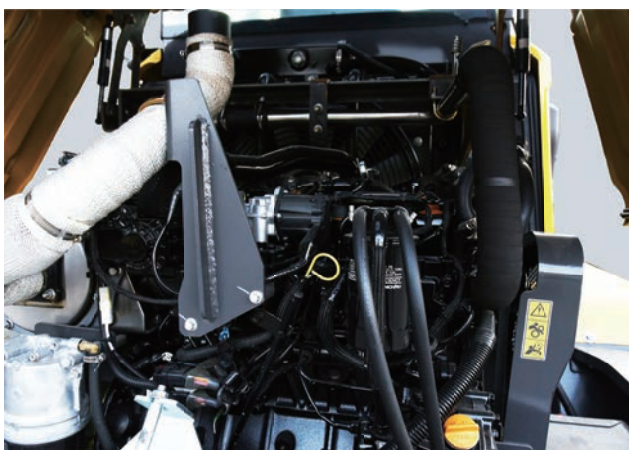
Multiple attachment options and available customized services.

EASY MAINTENANCE



Simple Maintenance Smart Solution

The optimized design ensures the proper structure of main components. The lubrication interface, pressure measurement interface and other interfaces are centralized, offering more convenient maintenance. The front-flip hood can be opened at a large angle, ensuring easy access to the maintenance points and minimizing downtime.



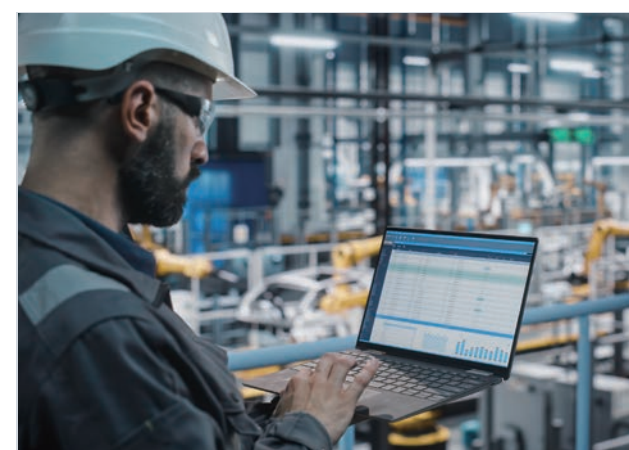
The front-flip hood opens over 45° and the side-flip cab opens 40°, facilitating easy access for maintaining the cab engine radiator, hydraulic oil tank and filter element.

Centralized repair point design for convenient maintenance.



Centralized pressure measurement simplifies the maintenance and inspection of hydraulic systems.

The controller is positioned in the pilot box on the right side, while the centralized fuse box is in the left box for convenient maintenance.



Remote diagnosis, enhancing maintenance efficiency.

Real-time monitoring of fuel consumption allows for easy analysis and effective management.

The engine diagnostic interface inside the cab can diagnose engine faults when connected to the computer.



Global coverage of marketing and service outlets ensures exceptional support.

The GPS terminal system monitors the machine's construction status and engine performance data.

MAIN SPECIFICATIONS

Overall Parameter

Type	Parameter	
Operating weight	6300kg	13889.1 lb
Bucket capacity	1.0m³	1.3 yd³
Rated load	1800kg	3968.3 lb
Maximum breakout force	165±5kN	58kN
Tipping load	Straight-4582kg	Straight-10101.6 lb
	Fully articulated-3850kg	Fully articulated- 48487.8 lb

Engine

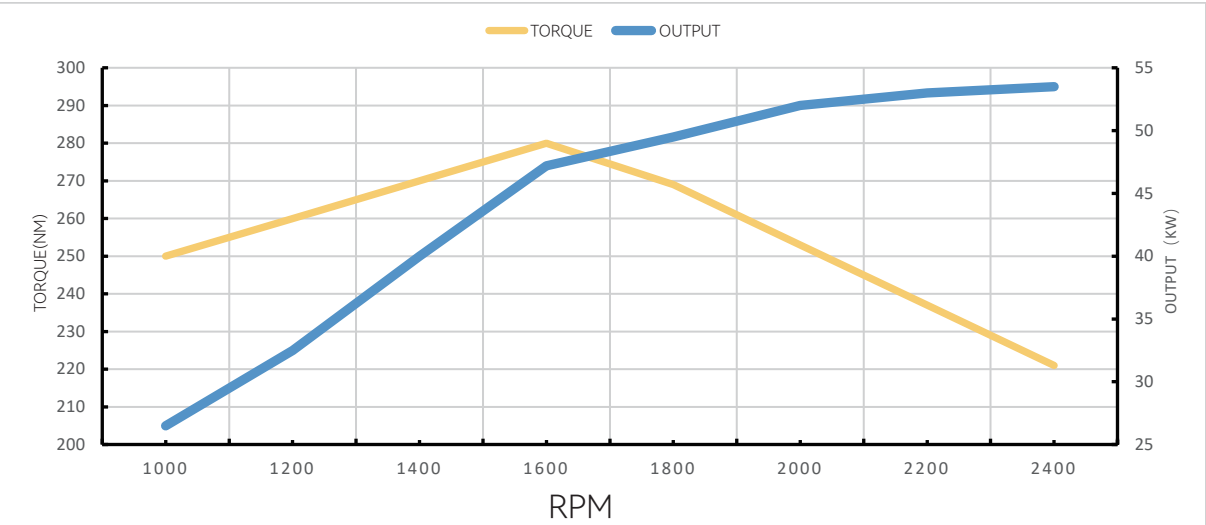
Manufacturer Model	Yanmar 4TNV98CT	
Type	In-line four-cylinder,Intake turbo-charging electronic common rail high-pressure injection	
Rated power	53.7kW@2500RPM	72.0hp@2500RPM
Maximum power	53.7kW@2500RPM	72.0hp@2500RPM
Maximum torque	269~291kN@1625±25RPM	269~291/1625±25
Emission stage	EU StageV	EU StageV
Displacement	3.3L	0.9gal

Driveline

Transmission	Type	Gearbox (electric parking)	
Travel speed	Forward	1st	9km/h
		2nd	20km/h
	Reverse	1st	9km/h
		2nd	20km/h
Braking distance		5.3m	17.4ft
Tyre		16/70R20	16/70R20
Minimum ground clearance		370mm	1.2ft

Axle

Drive system	Four-wheel drive
Front axle	Fixed
Rear axle	Fixed
Reduction gear	Planetary final drive in wheel hubs
Differential	Front/rear axle 100% differential lock



Engine External Characteristic Curve

Cab

Cab	ROPS&FOPS certified panoramic cab; Equipped with storage box, phone storage case, rear-view mirror, extinguisher, breaker, clothes hook; FNR integrated joystick meets high-end needs. Standard cooling and heating air-conditioner, adjustable seat and steering column provide comfortable operation.	
Heating power	5kW	6.7hp
Cooling power	3.8kW	5.1hp

Brakes

Service brake	Mechanical power brake complemented by an inching brake.
Parking brake	Electronic handbrake, hydraulically controlled, caliper disc brake brake.
Emergency brake	The emergency stop button inside the cab to help stop the engine in an emergency

Hydraulic System

Type	Fixed
Pumps	Gear pump
Rated flow	92.5L/min 24.4gal/min
Control valve	Third function valve
System pressure	24MPa
Operating hydraulic circuit	Lifting circuit for lifting, holding, lowering and staying movable status of the boom ,Tipping cylinder circuit for returning, holding and tipping the bucket,Boom and bucket can be operated simultaneously ,Third function hydraulic electric control joystick operation, one-touch cruise control operation.
Total circle time	≤11s
Hydraulic cylinder (type - amount - cylinder bore - rod diameter - stoke)	Lifting cylinder-2 Tipping bucket cylinder-1

Steering System

Type	Load-sensitive
Pump	Gear pump
Rated flow	92.5L /min
System pressure	19MPa 24.4gal/min
Hydraulic cylinder	1
Steering angle	±38°

Sound

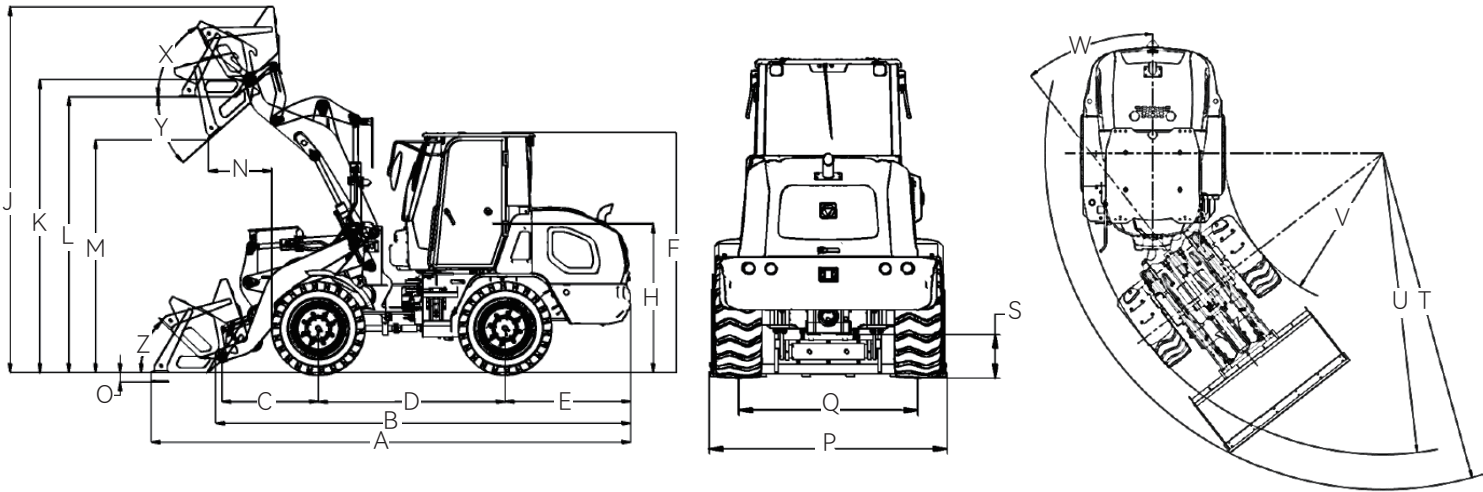
Exterior sound power level (Max cooling fan speeds)	101dB
Sound pressure level (ISO 6396:2008)	78dB
Exterior sound power level (ISO 6395:2008)	101dB
* The guaranteed sound levels described below may vary depending on factors including operating conditions, cooling fan speeds, engine type, and so on. Hearing protection is required if the operator works in an improperly maintained cab or is exposed to noisy environments with open doors or windows.	

Referenced Filling Capacity

*Reference only. Filling volume is based on the actual scale.

Type	Filling capacity	Filling capacity
Fuel tank	80L	21.1gal
Engine oil	5.5L	1.5gal
Front axle	13L	3.4gal
Rear axle	13L	3.4gal
Transmission case	2L	0.5gal
Coolant	15L	4.0gal
Hydraulic oil	47L	12.4gal

MAIN SPECIFICATIONS



	Dimension and Specification	Parameter	Parameter
A	Overall length	5520mm	18.11ft
B	Overall Length (without bucket)	4773mm	15.66ft
C	Distance: center of front axle to bucket pin	1108mm	3.64ft
D	Wheelbase	2150mm	7.05ft
E	Length rear: axle to bumper	1445mm	4.74ft
F	Height to top of cab	2745mm	9.01ft
H	Seat height (ground)	1660mm	5.45ft
J	Max lifting height	4193mm	13.76ft
K	Height to hinge pin, fully raised	3354mm	11.0ft
L	Clearance: Level Bucket	3155mm	10.35ft
M	Dumping height	2660mm	8.73ft
N	Dumping reach	723mm	2.37ft
O	Digging depth	90mm	0.295ft
P	Overall width	2060mm	6.76ft
Q	Wheel track	1550mm	5.09ft
S	Ground clearance	370mm	1.21ft
T	Turning radius: over bucket	4602mm	15.10ft
U	Turning radius: outside of tyre	4123mm	13.53ft
V	Turning radius: inside of tyre	2163mm	7.10ft
W	Steering angle	38°	38°
X	Rollback angle, fully raised	58°	58°
Y	Dumping angle for maximum lifting	42°	42°
Z	Rollback angle, ground	43.7°	43.7°

- The technology of XCMG wheel loaders is subject to constant improvement and upgrading. In case the specifications or detailed appearance contained in this brochure differ from actual products, the latter shall prevail.
- XCMG reserves the right of final interpretation for the above. Our products may be modified without prior notice to users.

EQUIPMENT

Powertrain	STD	OPT
YANMAR Engine	●	
Engine intake preheating	●	
Hydrostatic Continuously Variable Transmission	●	
Front/rear axle 100% differential lock		●
Electric parking brake		●
Dry service brake	●	
Emergency stop	●	
Independent heat dissipation	●	
Manual accelerator control	●	
Speed limited	●	
Traction control	●	
Radial tyre16/70-20	●	
Tubeless tyre16/70R20		●
Wide base tyre560/45R22.5		●

Hydraulic System	STD	OPT
Third function quick coupler	●	
Hydraulic lock	●	
Quick coupler oil cylinder lock	●	
Diagnostic pressure joint	●	
Hydraulic oil cooler	●	
Anti-explosion valve		●
Ride control		●
Electric controlled third function	●	
Third function flow lock	●	

Electrical System	STD	OPT
Electrical air cleaner blockage alert	●	
Fuel level	●	
Engine coolant temperature	●	
Transmission oil temperature display	●	
Engine tachometer	●	
Transmission oil temperature display	●	
Fuel tank display	●	
Working hour display	●	
Battery main switch	●	
Electric horn	●	
Parking brake	●	
High beams	●	
Turn signal	●	
2 Rear combination lights(Reserve,turn signal, clearance light,brake lights)	●	
2 Front roof working light (LED)	●	
2 Rear roof working light (LED)	●	
Main light	●	
2 Working light on the rear hood (LED)	●	
Working light	●	
Rotating warning light	●	

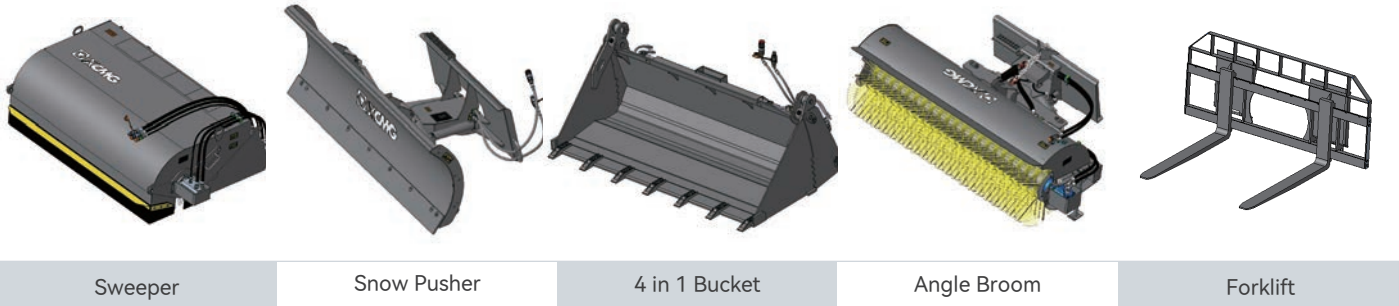
Safety	STD	OPT
Fire extinguisher	●	
Fuel tank filler cap lock		●
Boom safe lever	●	
Emergency steer		●

CAB	STD	OPT
Mirror heating		●
Rear wiper	●	
ROPS&FOPS cab	●	
Protective cab screen		●
Coat hooker	●	
Magazine bag	●	
Radio/USB player	●	
Wrist supports and armrests	●	
24V to 12V DC converter (20A)		●
Cab lock/key	●	
Cooling and heating air-conditioner	●	
3-inch retractable safety belt and adjustable air suspension (heated)		●
Air suspension seat		●
Cup holder	●	
Single brake pedal	●	
Start-up	●	
FNR gear	●	

Other	STD	OPT
Counterweight	●	
Traction pin	●	
Handrails/ladders/ platforms/pedals	●	
Splash guard (front/rear)	●	
ECD (Engine Connection Diagnosis)	●	
Anti-corrosion spray		●
Toolkit	●	
Reversible fan	●	

Bucket	STD	OPT
1.0m³standard bucket	●	
1.2m³ light material bucket		●
1.5m³ light material bucket		●
EU quick coupler	●	
US skid steer quick coupler		●

Attachment	STD	OPT
Cleaner		●
Auger		●
Breaker		●
Excavator		●
Digger		●
Planer		●
Tree Transplanter		●
Bulldozer		●
Industrial grapple		●
Forklift		●
Snow blade		●
Hay Spear		●
Deicer		●
Vibratory compactor		●
Hook		●
Oil Drum Clamp		●
Clamping Plier		●
Grass Catcher		●
Snow Thrower		●
Concrete mixer		●



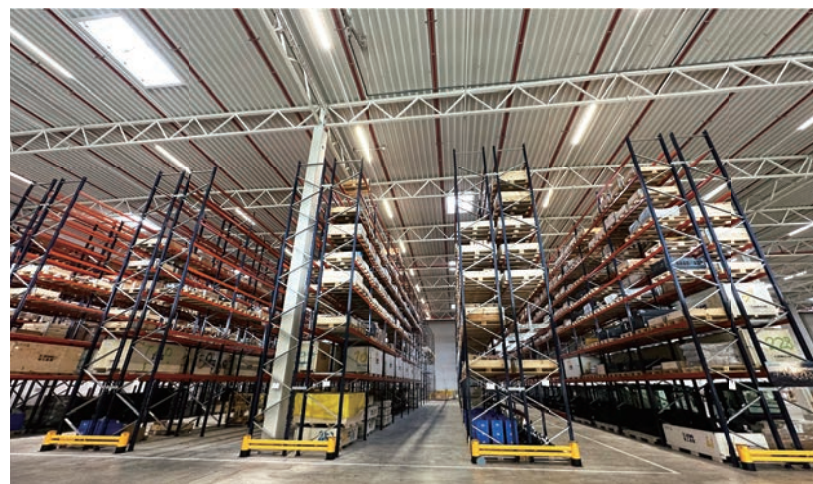
- XCMG loaders offer various attachment choices. Please contact your local dealer for detailed attachments and the delivery cycle after selection.

OPTIMUM SERVICES XCMG GUARANTEED



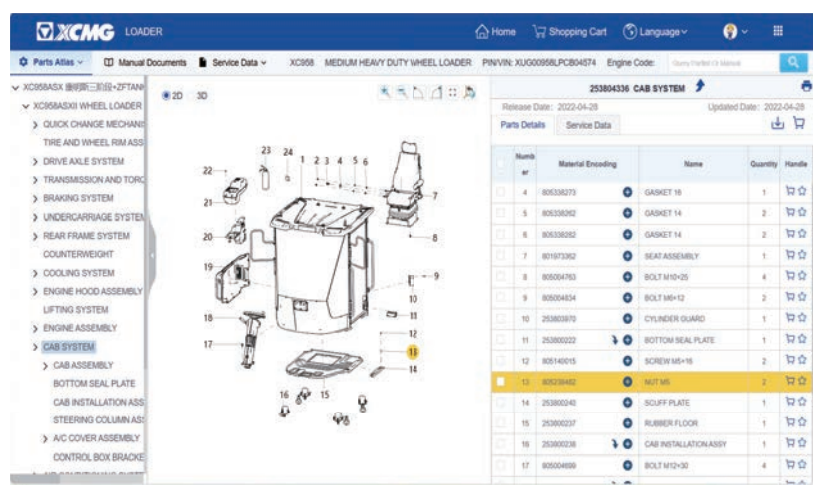
Telematic Information Processing

Remote Diagnosis. GPS terminal system monitors the construction state of the machine and the operating.



Professional Integrated Complete Solutions

XCMG has built a strong reputation based on the quality, reliability and durability of its construction machinery. What's more, XCMG has gradually established a service network to constantly provide its local integrated and highly efficient complete solutions for all customers.



Full Range of Services Ready for you

In order to respond to your needs as fast as possible, XCMG's experts are on their way to your job site from one of our facilities near you. Full range of services are available in order to reduce your total cost of ownership and increase your revenue.



Plateau Construction



Forestry Construction



Animal Husbandry



Road Construction



Stone Mining



Extreme Cold Working Condition



Mine Engineering



Grain Shoveling

Introduction

Our Mission and Vision: Empower Solid Future.

XCMG was initially founded as the Huaxing Iron Factory in 1943 and was established as a group in 1989. Being a trailblazer walking through the hard days in astern and steady manner, XCMG has taken the lead in development of Chinese construction machinery industry and become a billion-dollar leading enterprises with global competitiveness and influence. XCMG’s performance retained its NO.1 position in China construction machinery industry and has achieved the ranking of NO.3 in the Global construction machinery industry for 3 consecutive years and has been listed in the “World Brand 500” for 4 consecutive years.

XCMG Earthmoving Machinery Division is one of the five major business divisions of XCMG. We are professionally dedicated in the R&D, manufacturing, sale and supporting service of 0.6-35tons full-series loaders, skid-steer loaders and backhoe loaders. In line with the business philosophy of facing the world, integrating the world and serving the world, XCMG Earthmoving Machinery Division takes the leading position in quality and value, and become the new benchmark in the high-end market of China earthmoving machinery industry.

1943

TOP 3

TOP 3 Global Construction Industry

2000

More than 2000 Service Terminals

8500

More than 8500 Valid Patents

40

More than \$4 Billion Annual Exports