

All Rights Reserved

Materials and specifications are subject to change without notice.  
Featured machines in photos may include additional equipment.  
See your XCMG dealer for available options.



# SKID-STEER LOADER XC7-SV12



XCMG European Sales and Services GmbH  
Address: Europark Fichtenhain B 4, 47807 Krefeld,  
Deutschland  
Tel: +49 (0) 2151 8206 890  
Fax: +49 (0) 2151 8206 899  
E-Mail: [info@xcmg-ess.de](mailto:info@xcmg-ess.de)

XUZHOU CONSTRUCTION MACHINERY GROUP IMP. & EXP. CO., LTD  
Address: No.1, Tuolanshan Road, Xuzhou Economic Developing Zone, Jiangsu,  
China 221004  
Tel: +86(0) 516 8773 9703  
Fax: +86(0) 516 8773 9230  
E-Mail: [europe@xcmg.com](mailto:europe@xcmg.com)

[www.xcmg.com/en-ap](http://www.xcmg.com/en-ap)

XCMG FOR YOUR SUCCESS







## INTRODUCTION OF XCMG

XCMG, as a leading enterprise valued of 100 billion RMB, with the largest scale, the best technology level, the largest export volume, and high competitiveness and influence in China's construction machinery industry, has been occupying the first place in China's construction machinery industry for decades, and it now ranks the third in the world industry and the 395th among the world's top 500 brands.

The main products by XCMG consists of 16 categories of equipment such as hoisting machinery, excavation machinery, concrete machinery, mining machinery, earth-moving machinery and road machinery, etc., as well as three categories of key components such as hydraulic system, transmission system and electric control system. Among above-mentioned, hoisting machinery ranks first in the world, and package solution of road construction and maintenance machinery, piling machinery and concrete machinery are among the first-class bloc in the world.

XCMG has accumulated more than 8000 approved patents, including more than 1900 invention patents and more than 130 PCT international patents. Entities of R&D centers, manufacturing plants or KD factories are in operation in more than 10 countries such as Germany, the United States, Brazil and India, XCMG has also acquired three European enterprises including Schwing in Germany. The Brazil manufacturing plant, with an investment of 350 million dollars to build up factories on a bare ground, has become a model of economic cooperation between China and Brazil. At present, XCMG products are exported to 187 countries and regions, covering 97% of the countries along "The Belt and Road" area. In export business to 35 countries, XCMG's proportion ranks NO. 1, with a steady first place within Chinese industry in terms of annual export volume and overseas income.

## XCMG IN EUROPE

Since 1990s when XCMG was already a known brand within the industry in Europe, XCMG has been one of the major international manufacturers supplying products and service across the Continent. With its rapid development in recent years, XCMG is gradually building up an all-round network including: R&D department; local distribution, supply chain management and an integrated customer services and training center.

At present, XCMG has 3 subsidiaries in operation, with more than 100 multinational employees in Europe:

- ERC XCMG European research center GmbH
- EPC XCMG European purchasing center GmbH
- ESS XCMG European sales and services GmbH

XCMG is also holding a resource of more than 100 branches by local dealers throughout the Europe, generating a whole value chain that is serving the entire European market, including sales, service, financing, used equipment recycle, etc.

We actively and continuously implement our globalization strategy. Our first-class international team has many years of professional experience and excellent cross-cultural management capability.

With a strong combination of expertise and practical experience in a multicultural context, we create real value and provide a high level of return on investment to our European customers.





## Product Overview

- ▶ As the first new product of skid loaders, XC7-SV12 is configured with updated technology and performance oriented toward the North American market, which is the optimal choice for multiple conditions including road construction/maintenance/cleaning, snow removal, building engineering construction, forestry, landscape architecture, agriculture, slop finishing/leveling, and elevation/transportation, etc.



## Power Transmission System

- ◆ The internationally renowned brand YanMar engine is adopted, with strong power, low noise and high reliability. The whole machine has high reliability and fuel economy, low noise, low emissions, It is a high-quality product specially designed, manufactured and verified for the working conditions of construction machinery.
- ◆ The static hydraulic drive technology adopted features stable drive and high efficiency and reliability.
- ◆ The fully-sealed sprocket case and high strength chains feature automatic lubrication and maintenance-free.
- ◆ Hydraulic system: It includes internal high-flow combination, working cylinder with shock absorption, one-way leveling of moving arm, dual-speed system.







## Power Transmission System

- ▶ The XC7-SV12 features safety, reliability, advanced technology, and high efficiency, which is configured with multiple devices including the self-innovative vertical elevating mechanism with strong power, leveling function, and high operating efficiency, the panoramic driving cab with standard FOPS & ROPS mechanism for safety and reliability, space capsule-type driving compartment with intelligent display screen and real-time electronic monitoring system, to ensure its harmony of design and performance with intelligent and comfortable experience.



- |   |   |
|---|---|
| Ⓐ LED light C                           | Ⓓ High strength bucket E                        |
| Ⓑ ROPS&FOPS cab                         | Ⓔ Wear-resistant tires E D                      |
| Ⓒ High flow hydraulic quick change plug | Ⓕ Centralized system pressure measurement point |



## High Efficiency

- ◆ The working hydraulic system is optimized to realize the combined action of boom lifting and bucket overturning to ensure automatic leveling of the lifting arm, and the operation process is stable and efficient.
- ◆ The standard double-accelerator control model can use the pedal accelerator or work at preset constant power to save the operation labor.
- ◆ The machine has Compact structure, low turning radius, and strong site adaptability.
- ◆ The quick-change coupling equipped can change attachments rapidly in the construction site.
- ◆ Whole machine operation way to adopt Pilot hydraulic control & multifunction electronic control model, All operations are responsive and accurate.





## Comfortable

- ◆ The cab features large space, adjustable seats, and comfortable operations.
- ◆ The cab is designed according to the principle of ergonomics
- ◆ The interior space is spacious, and the operating field of vision is good.
- ◆ All the instruments are arranged in easy-to-observe positions. All button switches are within easy reach.
- ◆ The whole machine comes standard with Bluetooth, radio and audio.



## Reliability & Safety

- ◆ The integral frame adopted features compact structure and high firmness and reliability. All critical structural parts are optimized through finite element analysis to realize reasonable stress distribution.
- ◆ The working device and each hinge pin of the working device adopts high-strength pins to improve the service life of the structural parts.
- ◆ The main wear-resistant parts of the bucket are made of high-strength wear-resistant plates, and the structure is reliable.
- ◆ The cab is configured with the internal safety seat, safety belt, and extinguisher.
- ◆ The cab is configured with a rear emergency escape window.
- ◆ The hydraulic system has the function of turning off the boom and lowering the boom to ensure safe and reliable operation during the operation of the whole machine.
- ◆ The ROPS & FOPS driving cab is configured with the external removable protection grid and safety lock.



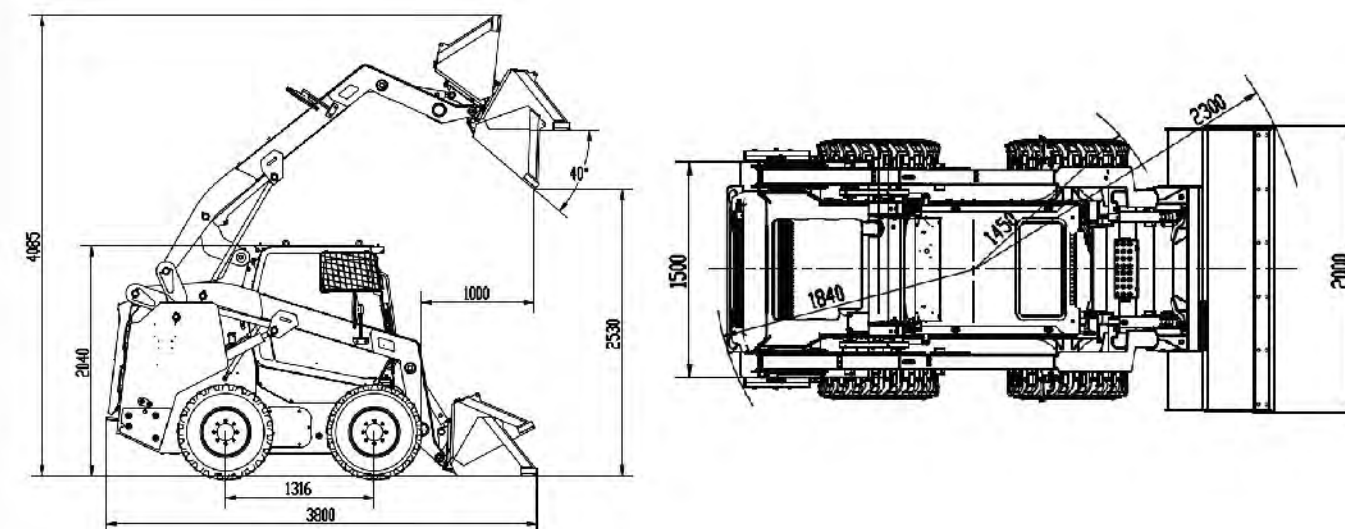


## Easy Maintenance

- ◆ The rear cover and the upper cover can be fully opened to open the radiator for easy maintenance in a sufficient rear space.
  - ◆ The cab can be fully turned for easy maintenance of hydraulic parts and pipes in a sufficient space.  
The central control box of the cab is configured with an access port for easy troubleshooting of
  - ◆ circuit failures, as well as an internal LCD of real-time monitoring on the engine to indicate relevant failure codes.
- Integrated maintenance-free chain wheel case with chains pre-tensioned, oil inlet and discharge
- ◆ port on the side and bottom of the case respectively for easy replacement of gear oil.
- The frame is configured with the lateral hydraulic test interface for east testing.
- ◆ The air-conditioning compressor is configured with high and low-pressure test ports for easy
  - ◆ system failure detection.
- The display of the driving cab can automatically read and indicate relevant information including
- ◆ internal ECU revolution, water temperature, oil pressure, etc., no external instrument required.



## The Main Technical Parameters



Description	Specifications	Unit
Rated load	1260	kg
Bucket capacity	0.6	m <sup>3</sup>
Operating mass	3950	kg
Rated power of the engine	53.7	kW
Rated speed of the engine	2500	r/min
Dumping height	2530	mm
Dumping range	1000	mm
Wheelbase	1316	mm
Wheel tread	1500	mm
Maximum breakout force	≥33	kN
Maximum traction force	≥36	kN
Total cycle time	≤11	s
Speed	11/21	km/h



# Optimum Services, XCMG Guaranteed



XCMG-approved attachments



Genuine parts



Extension of warranty



Financial solutions



Maintenance contract



Telematics

## Professional Integrated Complete Solutions

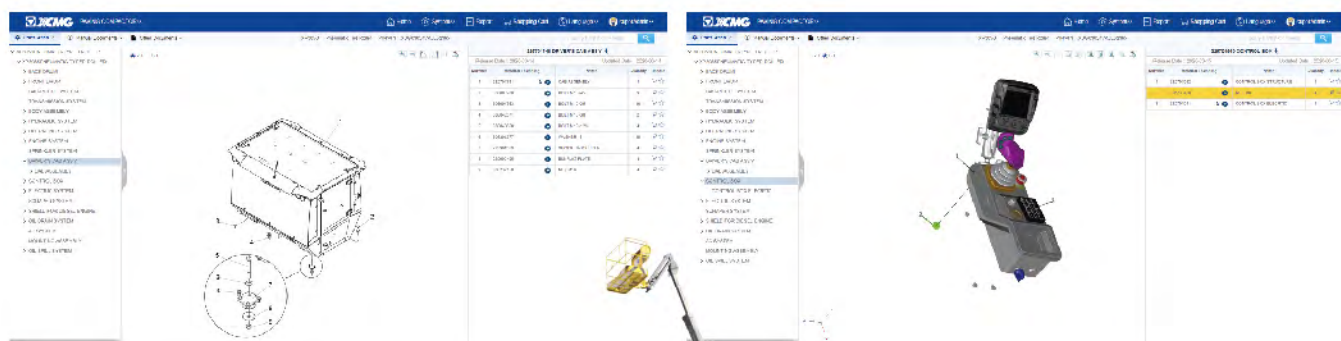
The XCMG group has built a strong reputation based on the quality, reliability, and durability of its construction machinery. What's more, XCMG has gradually established a service network to constantly provide its local integrated and highly efficient complete solutions for all customers.

## Full Range of Services Ready for you

In order to respond to your needs as fast as possible, XCMG experts are on their way to your job site from one of our facilities near you. A full range of services is available in order to reduce your total cost of ownership and increase your revenue.



## XCMG Global Spare parts System



Mobile cranes



Excavators



Aerial work platforms



Wheel loaders



Road machinery





